



# Special 312

- D Einbauanleitung  
Notentriegelung
- GB Installation Instructions  
Emergency release
- F Instructions de montage  
Déverrouillage d'urgence
- NL Montagehandleiding  
Noodontkoppeling
- I Istruzioni per l'installazione  
Sblocco d'emergenza
- E Instrucciones de montaje  
Desbloqueo de emergencia
- S Monteringsanvisning  
Nödfrikopplingens
- N Monteringsveiledning  
Nødåpningen
- DK Monteringsvejledning  
Nædåbningen
- PL Instrukcja montażu  
Awaryjne odblokowanie

## B. Meaning of symbols and index of technical terms

---

### Meaning of symbols:



**Warning! Risk of personal injury!**



**Attention! Risk of material damage!**



**Advice / Tip**

## C. Installation and Operating Instructions

### ① A - Boom extrusion

- Insert ball (A) into bolt (B).
- Push bowden cable sleeve (C) into the bearing (D) of the carriage.

### B - Boom extrusion

- Insert ball (A) into metal lever (B).
- Push bowden cable sleeve (C) into the bearing (D) of the carriage.

### C - Boom extrusion

- Pull cord (E) as far down, until the movable slide element (B) comes to stop (F) in the carriage.
- Hold cord and insert ball (A) according to picture into slide element.
- Release cord and insert bowden cable sleeve (C) into bearing (D) of the carriage.

For this purpose please insert bowden cable sleeve acc. to pict. from downward into the bearing and turn it towards top.

### ② A **Metal lock housing:**

- Remove inner door handle
- Install unlocking device (A) to upper left edge of lock housing. Screw it on with the existing screw (B).
- Slide the unlocking lever (C) according to picture onto the square bolt.
- Fix the screw (D) to unlocking device.
- Run the cable through the drill hole of the unlocking lever.
- Push the screw nipple (E) onto the cable and clamp it in place.
- Install again the inner door handle.
- Fix bowden cable using enclosed fixing parts (F) and (G) to the door connector attachment, to the hinges and on the door sections.



#### **Attention!**

- Choose the shortest possible distance from carriage to door lock!
- Avoid overtaut windings!

## C. Installation and Operating Instructions



### Attention!

Adjust bowden cable with adjusting screw (D) and screw nipple (E) without play.

## 2 B Plastic lock housing:



### Advice:

Before installing the emergency release beware of the existing fitting position of lock **right** or **left** (seen from inside).

The picture shows fitting situation inside **right**. Fitting position inside left is shown on picture with a dotted line, turned by 180°.

- Remove inner door handle.
- Screw fixing angle (A) with 2 drilling screws  $\varnothing 4,2 \times 13$  (B) to the lock housing.
- Fix adjusting screw (D) according to picture to fixing angle.
- Run cable through drill hole of carrier (C).
- Push crew nipple (E) onto the cable and clamp it in place.
- Install again inner door handle.
- Fix bowden cable using enclosed fixing parts (F) and (G) to the door connector attachment, to the hinges and on the door sections.



### Attention!

- Choose the shortest possible distance from carriage to door lock!
- Avoid overtaut windings!



### Attention!

Adjust bowden cable with adjusting screw (D) and screw nipple (E) without play.

## C. Installation and Operating Instructions

### 3 Shortening the bowden cable (if necessary):

- Measure the exact length when door is open.
- Remove the end sleeve from the bowden cable mantle
- Pull the cable far enough back to allow the outer mantle to be cut on the appropriate point.
- Replace the end sleeve.
- Push the screw nipple onto the cable and shorten the remaining length to approx. 50 mm.



#### Tip:

Before cutting the cable, wrap it with insulation tape to prevent the cable from splicing.

### 4 Connection between door and operator:

After completion of installation and checking of function the door must be locked.

If the emergency release is required, the door must first be unlocked.

After having used the emergency release, make a test run to make sure that the motor operates the door again.

The bolt (picture 1a / position B) and the metal lever (picture 1b / position B) must be removed to their rear operating position.

**The red unlocking bolt (picture 1 c / position G) of the flat carriage has to be pushed back by hand in direction of the arrow.**

The symbols (pictograms) on the downward side of the carriage show the actual operating position according to picture:

#### **The door is separated from operator.**

- The front edge of the movable slide element (B) is above arrow of symbol 'lock open'.

## C. Installation and Operating Instructions

---

**The door is connected to operator or will be connected after next door travel automatically**

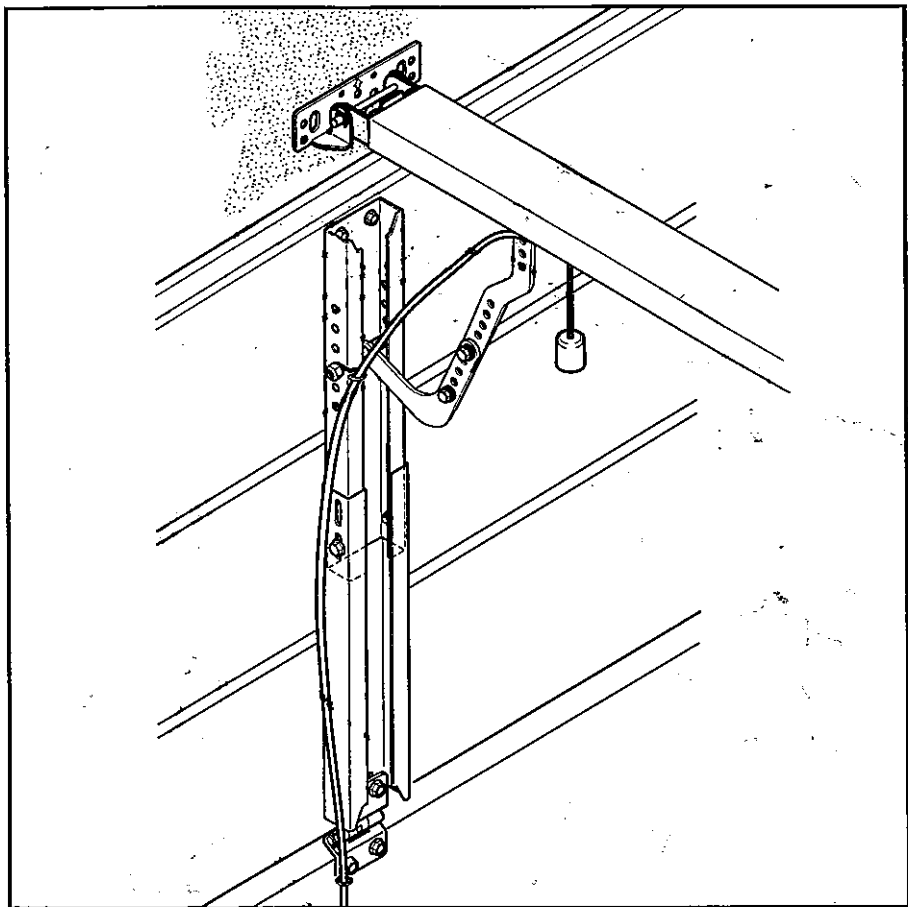
- The front edge of the movable slide element (B) is above the arrow of symbol 'lock closed'.



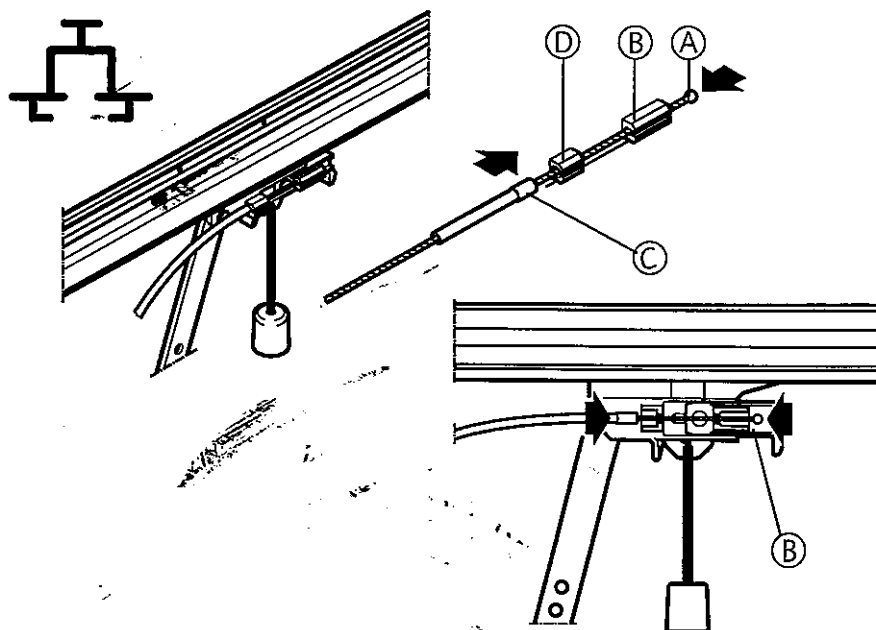
### **Attention!**

Check the function of the emergency release regularly.

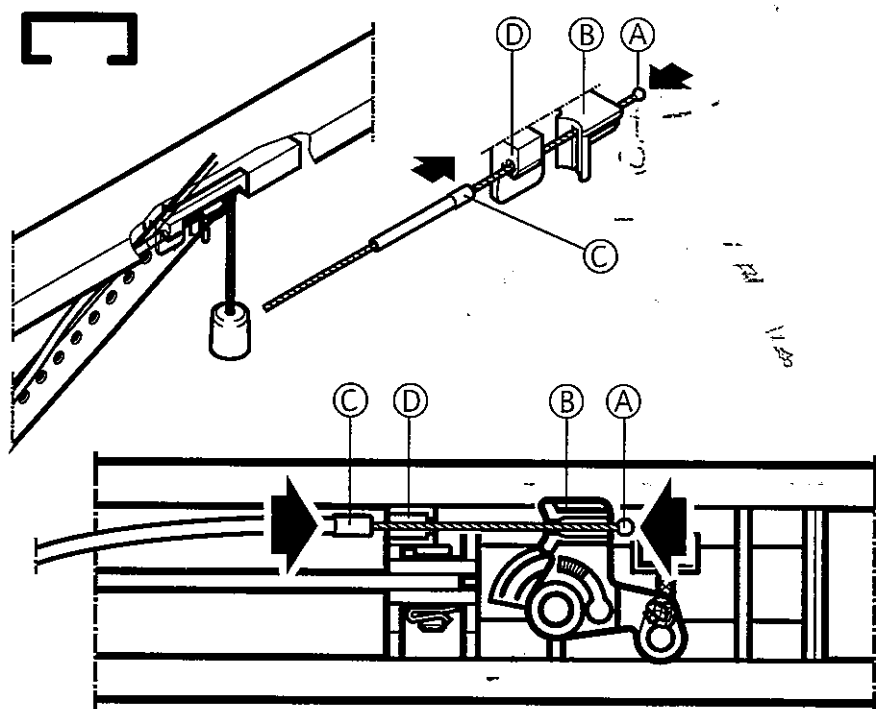
# 2 Special 312



1a

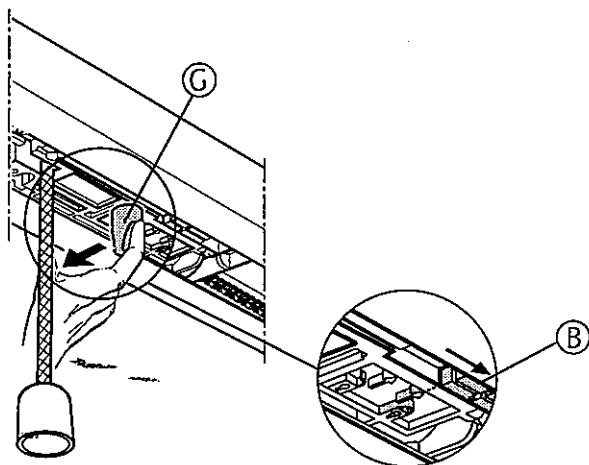
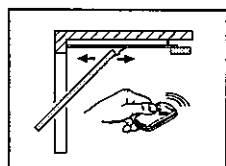
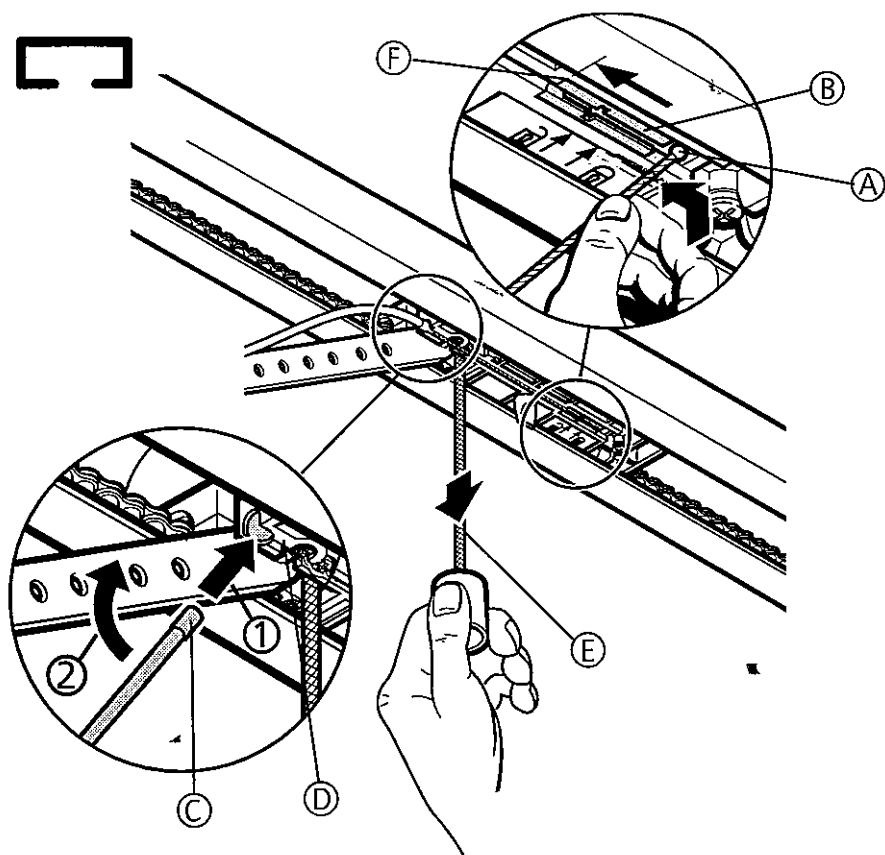


1b



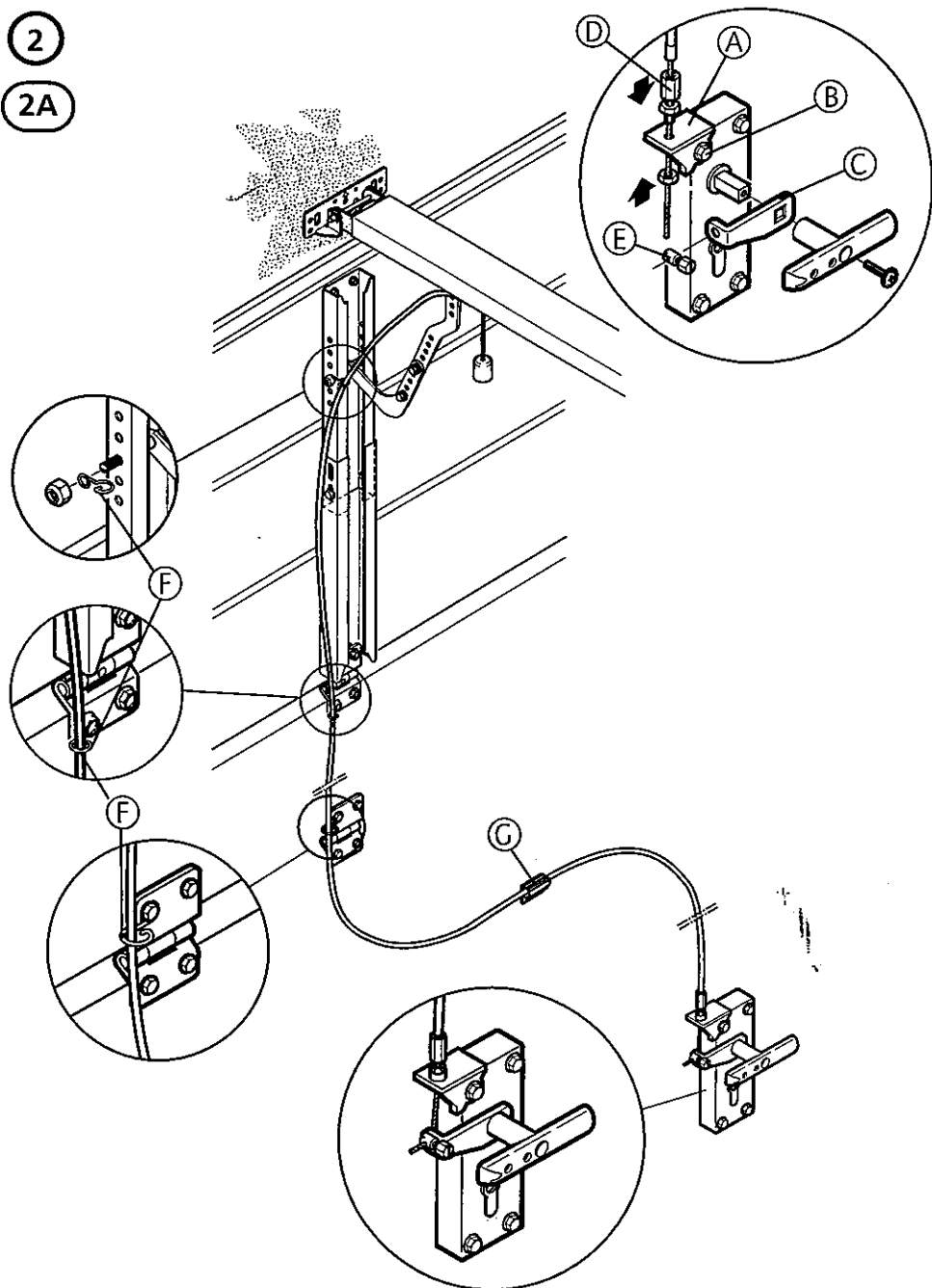


1c



2

2A



2B

