

Dexxo Compact RTS

EN User's manual

CONTENTS

GENERAL INFORMATION	1
About Somfy	1
Assistance	1
SAFETY INSTRUCTIONS	1
Standards	1
PRODUCT DESCRIPTION	2
Description	2
OPERATION AND USE	2
Normal operation	2
Safety instructions	2
Specific operation	3
Power outage	4
ADDITIONAL DEVICES	4
MAINTENANCE	4
Changing the integrated light bulb	4
Checks	5
Replacing the battery	5
RECYCLING	5
TECHNICAL DATA	5

GENERAL INFORMATION

Thank you for choosing a SOMFY product. This equipment has been designed and manufactured by Somfy in accordance with a quality policy complying with the ISO 9001 standard.

About Somfy

Somfy develops, manufactures and sells automatic control devices for domestic opening and closing systems. We offer alarm systems, automatic control devices for awnings, roller shutters, garages and gates. We guarantee all Somfy products will meet your expectations in terms of safety, comfort and time saving on a daily basis.

At Somfy, the pursuit of quality is a continuous process of improvement. Somfy's reputation has been built upon the reliability of its products and the Somfy brand is synonymous with innovation and technological expertise worldwide.

Assistance

Getting to know our customers, listening to them, meeting their needs: this is Somfy's approach.

For further information on how to choose, purchase or install Somfy systems, please ask your Somfy installer for advice or contact a Somfy advisor directly for help and assistance.

www.somfy.com

As part of our policy of continuous innovation and improvement of our models, we reserve the right to make any modifications deemed necessary at any time. © SOMFY. Somfy SAS, with a capital 20.000.000 Euros, RCS Annecy 303.970.230

SAFETY INSTRUCTIONS

Standards

This product complies with the "safety, specific rules for powering vertically opening garage doors in residential use" standard (standard EN 60335-2.95). This product, which is installed in accordance with this guide and the "installation verification sheet", complies with the EN 13241-1 and EN 12453 standards.

The instructions referred to in the product's installation guide and instructions for use are designed to prevent damage to property and personal injury along with compliance with the above standards. Failure to comply with these instructions absolves Somfy of any liability resulting from damage that may be caused. The Dexxo Compact RTS product must be installed inside the garage with an integrated emergency control system.

Somfy declares that this product complies with the essential requirements and other relevant provisions of Directive 1999/5/EC. A Declaration of Conformity is available at www.somfy.com/ce (Dexxo Compact RTS).

Product can be used in the European Union and Switzerland.



Important safety instructions. It is important to follow these instructions for the safety of all persons.
Retain these instructions.

Safety instructions

This device is not designed to be used by persons (including children) whose physical, sensory or mental capacity is impaired, or persons with little experience or knowledge, unless they are under supervision or have received instructions on using the device by a person responsible for their safety.

Every month, check that the door reverses its movement when it encounters an object which is at least 50 mm high on the ground. If this is not the case, contact your installer. Take care when using the manual back release device as a manual door can suddenly fall off if the springs are weak, broken, or incorrectly balanced.

Frequently check the installation, particularly the cables, springs and mountings, to reveal any signs of wear, deterioration or incorrect balancing. Do not use the system if a repair or adjustment is necessary as a fault in the installation or an incorrectly balanced door can cause injuries. Have the motorisation checked every year by a qualified technician.

For all direct operations on the motorisation, please contact a qualified technician (installer).

In the event of incorrect operation, switch off the power supply, use the manual release device to enable access and request assistance from a qualified technician (installer).

Before any handling or maintenance operations, disconnect the electrical power supply and if necessary, remove the battery (Fig. 1).

Do not allow children to play with the door control devices. Keep remote controls out of the reach of children (Fig. 2).

For the integrated lighting, only use a bulb with a maximum power of 24 V 21 W, BA 15s socket (Fig. 3).

Monitor the movement of the door and ensure that people are kept at a distance until the end of the movement.

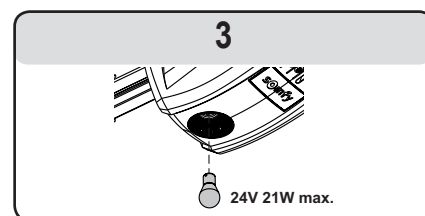
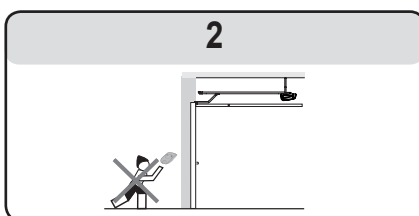
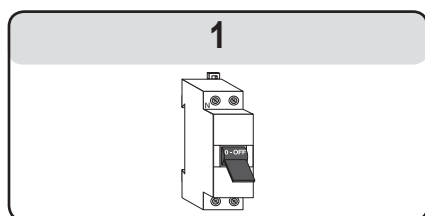
When using a switch without a locking device (for example: code keypad, etc.), ensure that other people remain at a distance.

Do not deliberately prevent the door from moving.

Do not try to open the door manually if the motor is not released.

Do not modify the motorisation components.

Never clean the motorisation system with high pressure water cleaning equipment.

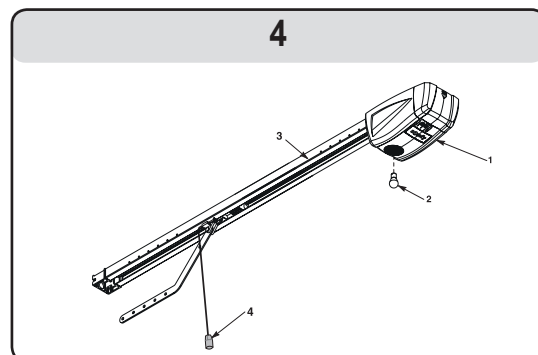


PRODUCT DESCRIPTION

Description (Fig. 4)

The Dexxo Compact RTS assembly has been designed for the motorisation of garage doors for residential use. This motorisation is composed of:

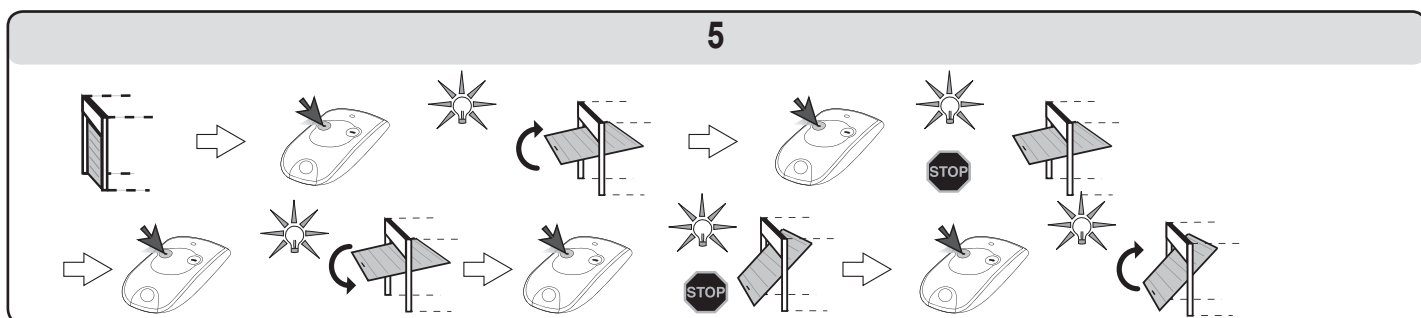
- a motor head (No. 1) with integrated lighting (No. 2).
- a rail assembly (No. 3) with a manual back release device (No. 4).



OPERATION AND USE

Normal operation

Operation in "Total opening" mode with a Keytis type remote control or similar (Fig. 5)



Integrated lighting operation

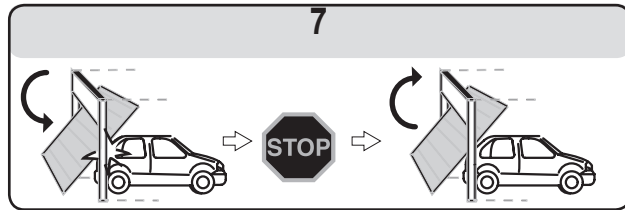
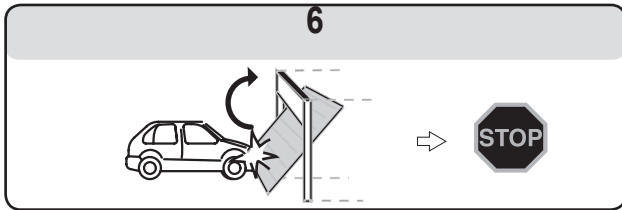
The lighting comes on each time the motorisation is switched on. When the door stops moving, it goes off automatically after 30 seconds. Repetitive use will cause the light to be lit constantly which may result in the light being switched off automatically due to thermal protection.

Obstacle detection operation (Fig. 6 and 7)

When an obstacle is detected during opening, the door will stop (Fig. 6).

When an obstacle is detected during closing, the door will stop and then re-open (Fig. 7).

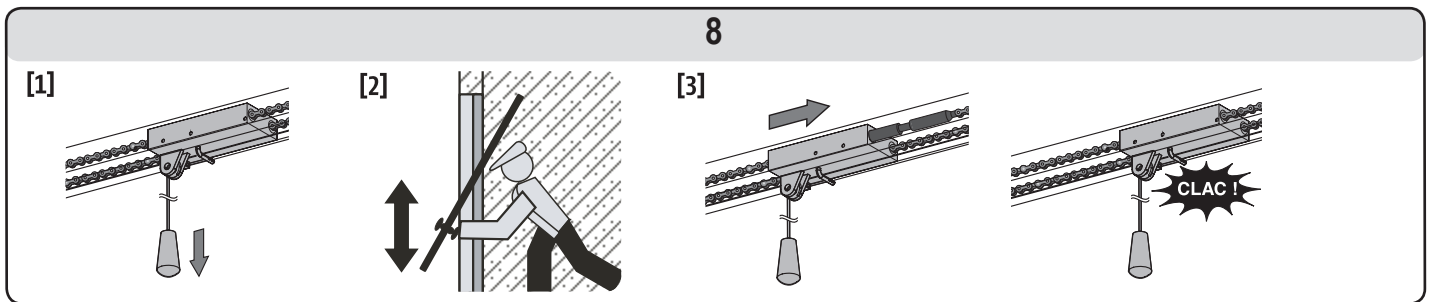
The integrated lighting is activated intermittently for 30 seconds.



Operation of the manual back release device (Fig. 8)

The Dexxo Compact RTS is equipped with a manual back release device which makes it possible to manipulate the door manually, for example in the event of an electrical fault. This device must be able to be accessed easily, at a **maximum** of 1.80 m from the ground.

- [1]. Releasing the motorisation
Pull on the cord until the door drive system is released.
- [2]. Manual manipulation of the door
This is possible as the drive system is released.
- [3]. Re-engaging the motorisation
Move the door manually until the drive mechanism re-locks on the transmission rail.

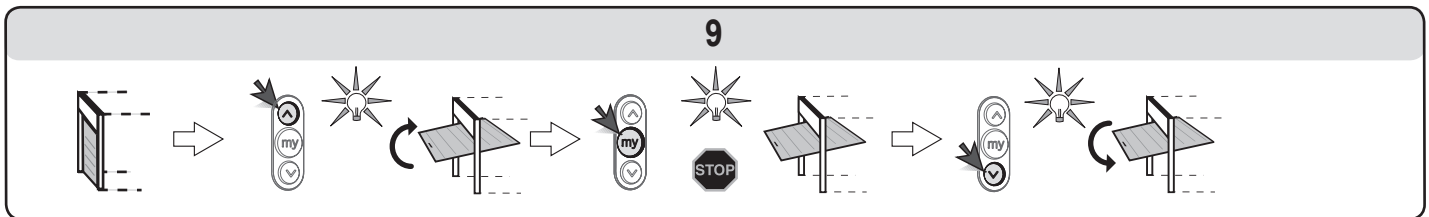


! *When releasing the motorisation, sudden movements may occur if the door is incorrectly balanced which may be dangerous. Only use the cord to release the motorisation. Never use the cord to manipulate the door manually. It is essential that the motorisation is re-engaged before any new commands.*

Specific operation

Depending on the peripherals installed and the operating options programmed by your installer, the Dexxo Compact RTS motor may have the following specific functions:

Operation in "Total opening" mode with a TELIS type remote control or similar (Fig. 9)



Operation with safety cells

An obstacle placed between the cells will prevent the door from closing.
if an obstacle is detected when the door is closing, the door stops then reopens.
The integrated lighting is activated intermittently for 30 seconds.

Operation with orange flashing light

The orange light is activated whenever the door moves, with a 2-second pre-warning before movement starts.

Operation using the backup battery

If a backup battery is installed, the Dexxo Compact RTS motor will work even during a general power outage.
Operation is then activated under the following conditions:

- Reduced speed.
- The lighting does not work.
- The safety devices do not work.

Battery specifications:

- Operation time: 24 hours; 5 to 10 operating cycles depending on the weight of the door.
- Recharging time: 72 hours
- Service life before replacement: Approximately 3 years.

For optimum battery life, it is recommended that the main power supply be switched off and the motor operated using the battery for several cycles, three times a year.

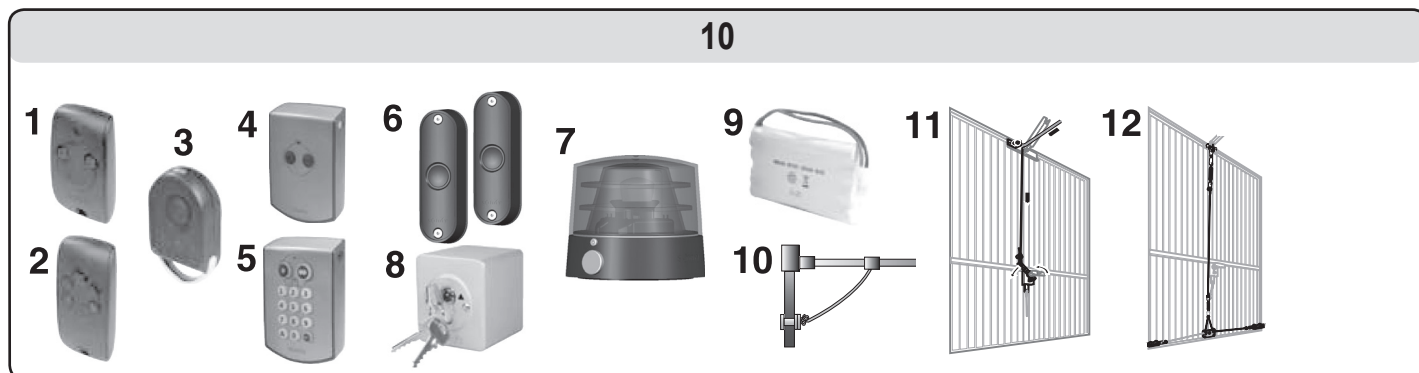
Power outage

Following a power outage, the motor must recognise its "fully open" position again. Open the door fully using a memorised remote control. The door will open at a degraded speed.

Allow the door to open to the "fully open" position.

ADDITIONAL DEVICES

Several additional devices are available.

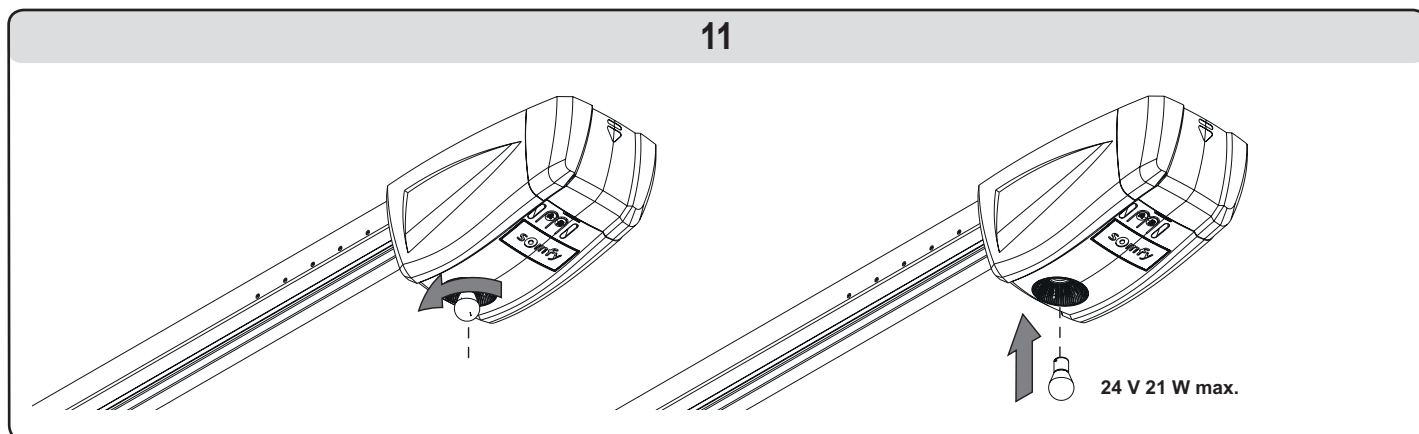


No.	Description	Comments
1	KEYTIS 2NS RTS remote control	2-channel portable remote control:
2	KEYTIS 4NS RTS remote control	4-channel portable remote control:
3	KEYGO remote control	4-channel keyring remote control:
4	Push-button RTS	2-channel wall control point. Use inside the garage.
5	RTS radio code keypad	Access code control point. Use outside the garage.
6	Photoelectric cells	To prevent the door from closing in the event of an obstacle.
7	Orange light	To warn of door movements outside the garage.
8	Key lock	Key control switch. Use outside the garage.
9	Battery	To ensure correct operation in the event of a power outage.
10	Unlocking lock	Enables the motorisation to be unlocked from the outside using a key. Highly recommended when the garage door is the only way to access the garage.
11	External unlocking	Enables the motorisation to be unlocked from the outside using the handle on the door. Highly recommended when the garage door is the only way to access the garage.
12	Door locking kit	System used to reinforce door locking.

MAINTENANCE

Changing the integrated lighting bulb (Fig. 11)

Unscrew the faulty bulb and replace it.
Only use a 24 V 21 W bulb, BA15s socket.



Checks

Obstacle detection

Every month, check that the door reverses its movement when it encounters an obstacle which is at least 50 mm high placed on the ground.

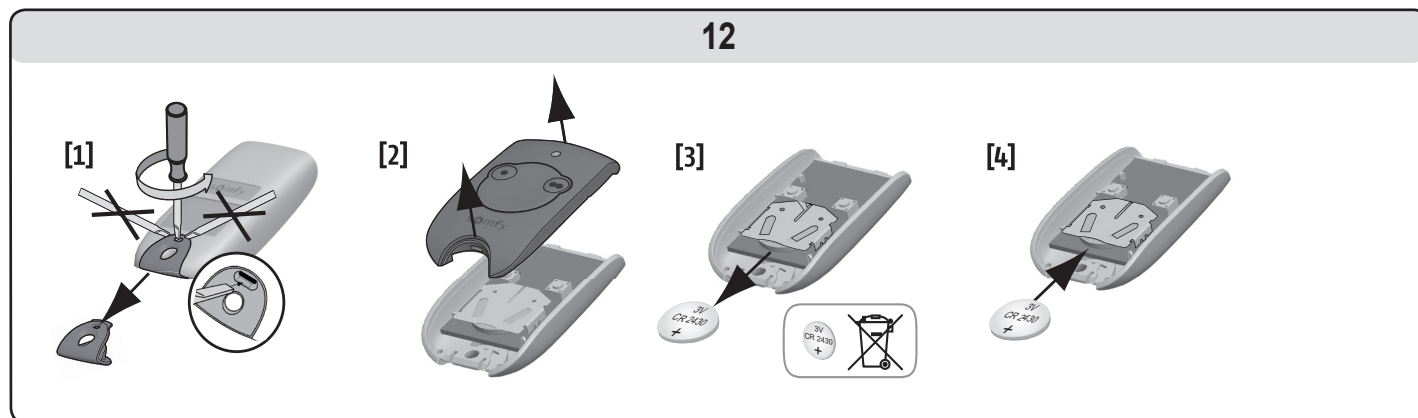
Safety devices (cells)

Check the correct operation every 6 months (see page 3).

Backup battery

For optimum battery life, it is recommended that the main power supply be switched off and the motor operated using the battery for several cycles, three times a year.

Replacing the battery (Fig.12)



RECYCLING



Do not throw away your scrapped equipment or used batteries with household waste. It is your responsibility to dispose of your electronic equipment in the relevant recycling points.

TECHNICAL DATA

Basic technical data	
Power supply	230 V - 50 Hz
Standby power consumption	4 W
Max. power consumption	120 W
Tensile force - Maximum force	600 N
Operation	20 cycles per day (tested for 10000 cycles)
Number of storable channels	32
SOMFY radio frequency	433.42 MHz RTS
Integrated lighting	24 V / 21 W max. BA15s socket
Operating temperature	-20°C / +60°C

Somfy

50 avenue du Nouveau Monde
BP 152 - 74307 Cluses Cedex
France

www.somfy.com

Somfy Worldwide

Argentina : Somfy Argentina

+55 11 (0) 4737-37000

Australia : Somfy PTY LTD

+61 (0) 2 9638 0744

Austria : Somfy GesmbH

+43(0) 662 / 62 53 08 - 0

Belgium : Somfy Belux

+32 (0)2 712 07 70

Brasil : Somfy Brasil STDA

+55 11 (0) 6161 6613

Canada : Somfy ULC

+1 (0) 905 564 6446

China : Somfy China Co. Ltd

+8621 (0) 6280 9660

Cyprus : Somfy Middle East

+357 (0) 25 34 55 40

Czech Republic : Somfy Spol s.r.o.

(+420) 296 372 486-7

Denmark : Somfy Nordic AB Denmark

+45 65 32 57 93

Finland : Somfy Nordic AB Finland

+358 (0) 957 13 02 30

France : Somfy France

+33 (0) 820 374 374

Germany : Somfy GmbH

+49 (0) 7472 9300

Greece : Somfy Hellas

+30 210 614 67 68

Hong Kong : Somfy Co. Ltd

+852 (0) 2523 6339

Hungary : Somfy Kft

+36 1814 5120

India : Somfy India PVT Ltd

+91 (0) 11 51 65 91 76

Indonesia : Somfy IndonesiaEra

+62 (0) 21 719 3620

Iran : Somfy Iran

0098-217-7951036

Israel : Sisa Home Automation Ltd

+972 (0) 3 952 55 54

Italy : Somfy Italia s.r.l

+39-024 84 71 84

Japan : Somfy KK

+81 (0)45-475-0732

+81 (0)45-475-0922

Jordan : Somfy Jordan

+962-6-5821615

Kingdom of Saudi Arabia :

Somfy Saoudi

Riyadh : +966 1 47 23 203

Jeddah : +966 2 69 83 353

Kuwait : Somfy Kuwait

00965 4348906

Lebanon : Somfy Middle East

+961(0) 1 391 224

Malaysia : Somfy Malaysia

+60 (0) 3 228 74743

Mexico : Somfy Mexico SA de CV

+52(0) 55 5576 3421

Morocco : Somfy Maroc

+212-22951153

Netherlands : Somfy BV

+31 (0) 23 55 44 900

Norway : Somfy Norway

+47 67 97 85 05

Poland : Somfy SP Z.O.O

+48 (0) 22 509 53 00

Portugal : Somfy Portugal

+351 229 396 840

Romania : Somfy SRL

+40 - (0)368 - 444 081

Russia : Somfy LLC

+7 095 781 47 72

Singapore : Somfy PTE LTD

+65 (0) 638 33 855

Slovak Republic : Somfy Spol s.r.o.

(+421) 33 77 18 638

South Korea : Somfy JOO

+82 (0) 2 594 4333

Spain : Somfy Espana SA

+34 (0) 934 800 900

Sweden : Somfy Nordic AB

+46 (0) 40 165900

Switzerland : Somfy A.G.

+41 (0) 44 838 40 30

Syria : Somfy Syria

+963-9-55580700

Taiwan : Somfy Taiwan

+886 (0) 2 8509 8934

Thailand : Somfy Thailand

+66 (0) 2714 3170

Turkey : Somfy Turkey

+90 (0) 216 651 30 15

United Arab Emirates : Somfy Gulf

+971 (0) 4 88 32 808

United Kingdom : Somfy LTD

+44 (0) 113 391 3030

United States : Somfy Systems Inc

+1 (0) 609 395 1300

